



IRGC
International risk
governance council



EPFL
ÉCOLE POLYTECHNIQUE
FÉDÉRALE DE LAUSANNE
Center on Risk Analysis
and Governance (CRAG)

CRAG - IRGC Symposium 2013

UNCERTAINTY: FROM INSIGHT TO ACTION

20 - 22 November 2013, Lausanne, Switzerland

Risk is a matter of probability and severity, but there are uncertainties involved in the assessment of probability and severity. As a consequence, there are also uncertainties in the impact of risk. Describing and dealing with technical uncertainties must not be generalised as an important element of risk analysis and governance, allowing better informed decisions. The symposium will address the treatment of uncertainty for public and corporate planning and decision-making.

AUDIENCE

- Academics and representatives of public and private sector organisations interested in sharing knowledge about risk and risk governance and seeking to attend the plenary sessions on 20 and 22 November
- Parallel workshops will be organised on 21 November. Participants will engage in collaborative work for the improvement of analysis and effective strategies for dealing with uncertainty.

VENUE

École Polytechnique Fédérale de Lausanne (EPFL)
Auditorium

MORE INFORMATION

Website: www.irgc.org | <http://www.epfl.ch>
E-mail: irgc@epfl.ch | crag@epfl.ch

Wednesday, 20 November
Plenary session, upon registration, open to all
Understanding and managing uncertainty


Thursday, 21 November
Parallel workshops, upon registration

- Risk quantification
- Decision making under uncertainty: behavioural aspects
- The governance of energy transition

Friday, 22 November
Plenary session, upon registration, open to all
Governing and communicating uncertainty



Goals of the CRAG-IRGC Symposium and my Perspective as the CRAG Scientific Director

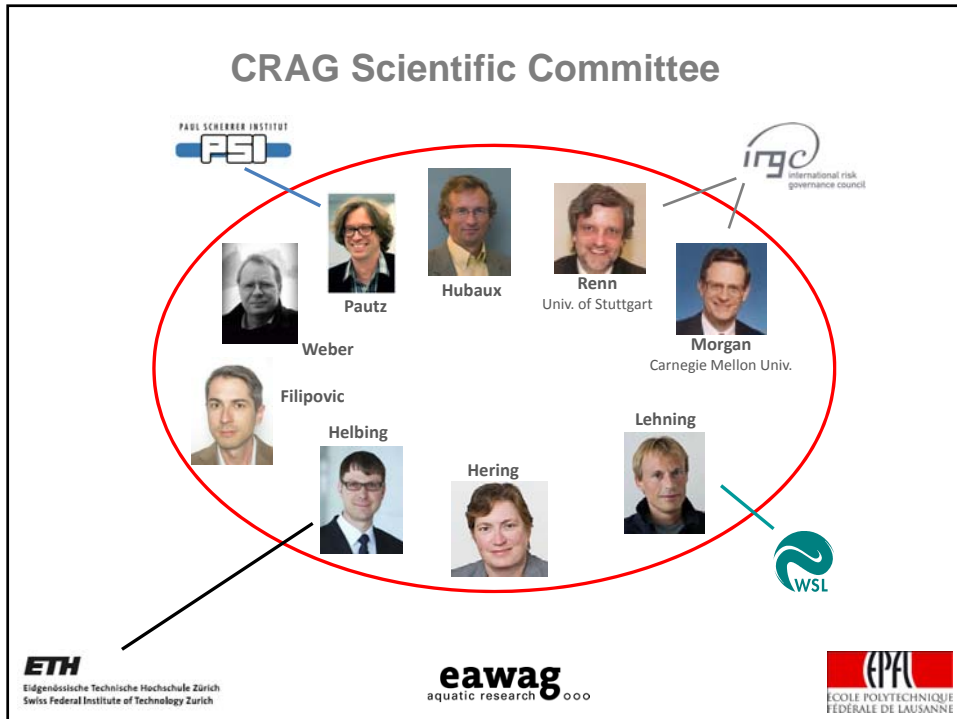
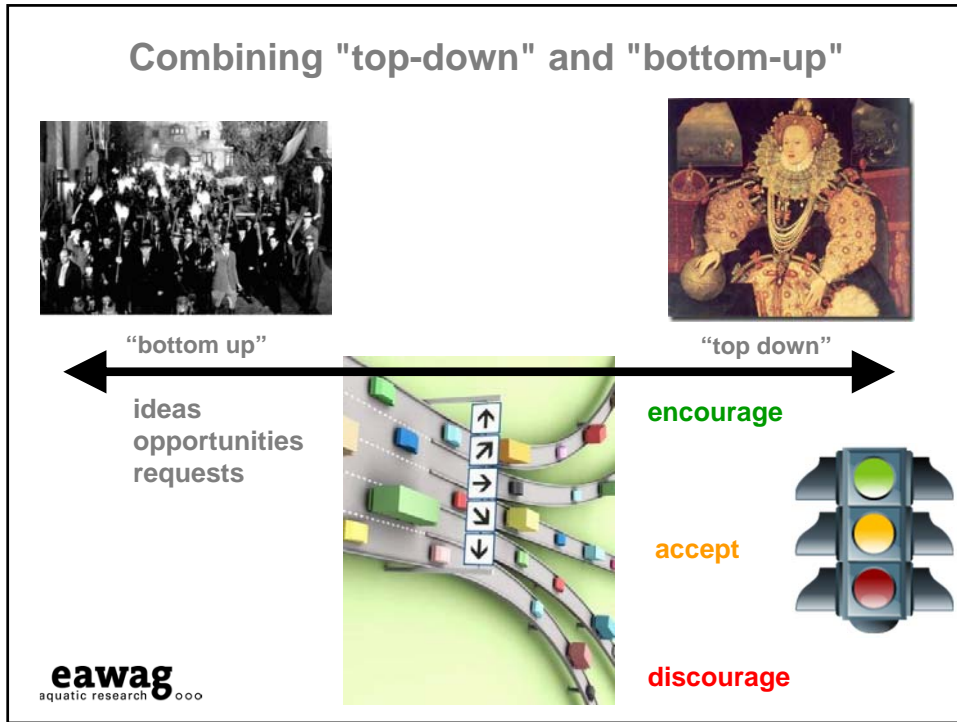
Prof. Dr. Janet G. Hering
*Director, Eawag
Scientific Director, CRAG*
*Professor for Environmental Chemistry, EPFL
Professor for Environmental Biogeochemistry, ETHZ*


CRAG goals for 2013

- Build constituency within EPFL faculty
- Establish visibility at EPFL
- Initiate PATT search
- Leverage IRGC-CRAG connection



CRAG Visiting Professors



Fall 2013
 Prof. Ben Ale (TU Delft)
 Host: M. Finger (CDM)



Winter 2014
 Prof. Richard de Neufville (MIT)
 Host: A. Schleiss (ENAC)



Fall 2014
 Prof. Claudia Klüppelberg (TU Munich)
 Host: A. Davison (SB), D. Filipovic (CDM, SB)

CENTER ON RISK ANALYSIS AND GOVERNANCE CRAG

Mission Functions Events Faculty and Visiting Professors Scientific Committee Management

Share Print

Faculty and Visiting Professors

Open Faculty Position in Cyber-Physical Risk Management

Cyber-physical risk management is one of the identified areas of interest for a broad faculty search being conducted by the School of Computer and Communication Sciences (IC) at EPFL. The search in this sub-area is targeted at the level of tenure-track assistant professor. The professorship will be affiliated with the EPFL Center for Risk Analysis and Governance (CRAG) which has resources available for Visiting Professorships and provides a link to the International Risk Governance Council (IRGC) and its academic network.

The field of cyber-physical risks, security, privacy, surveillance and, in general, risk management for the digital world poses critical challenges that have both technical and governance aspects. The capacity to deal with these multi-dimensional aspects will be strengthened by the association of the professorship with CRAG, which can support activities in research and education, and IRGC, which provides a convening platform for international and multi-stakeholder dialogue.

For the official IC announcement, further information and application procedures, please see: <http://professeurs.epfl.ch/page-99464-en.html>.

Review of applications will begin on December 1, 2013

