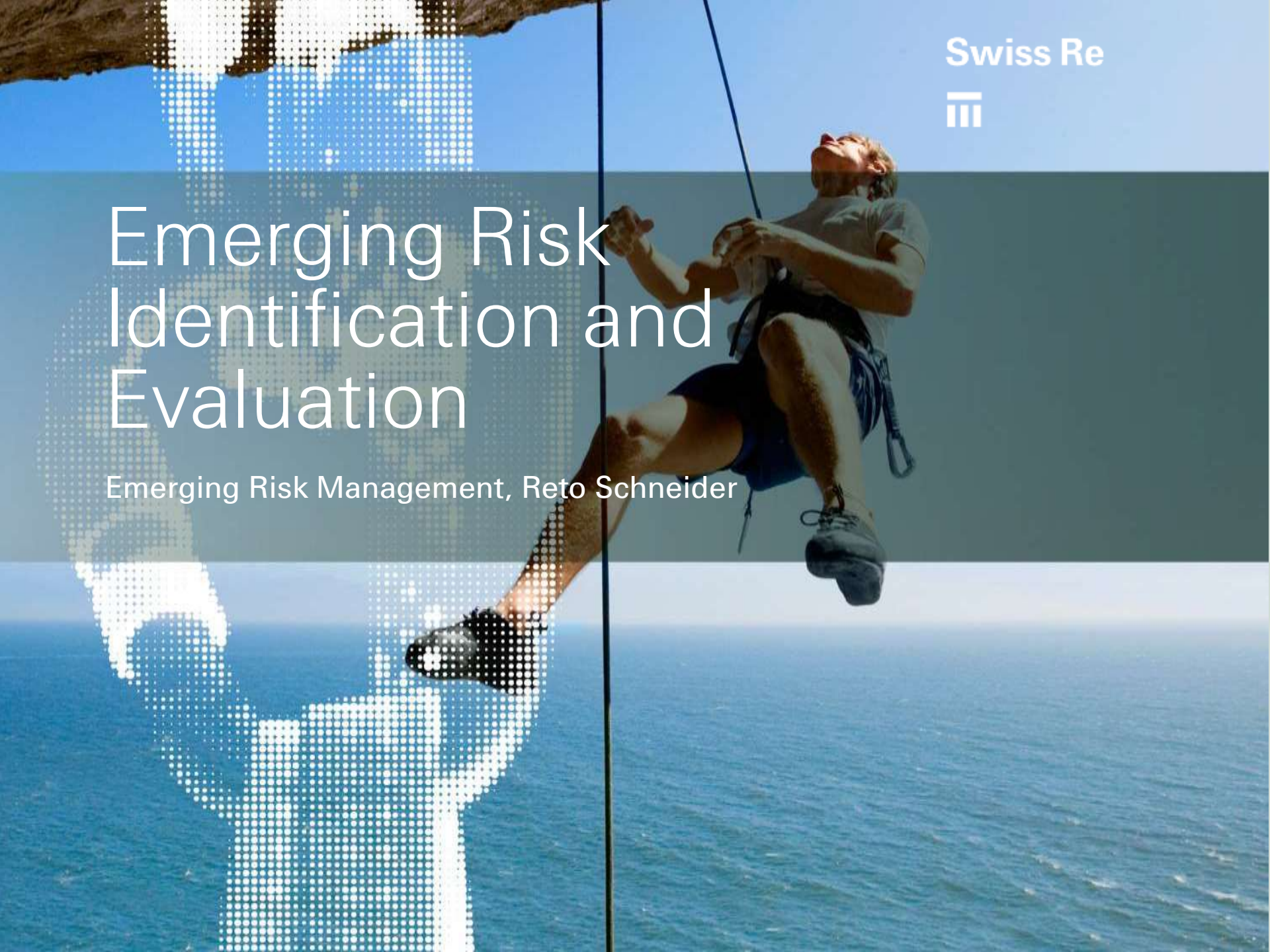


Swiss Re



Emerging Risk Identification and Evaluation

Emerging Risk Management, Reto Schneider



Emerging Risk Governance

- Exploring/Scouting
- Detecting
- Reporting
- ?

Strolling

- not directed
- accidental
- surprise
- adventure
- hanging out

Scouting

- directed
- focused
- clear task

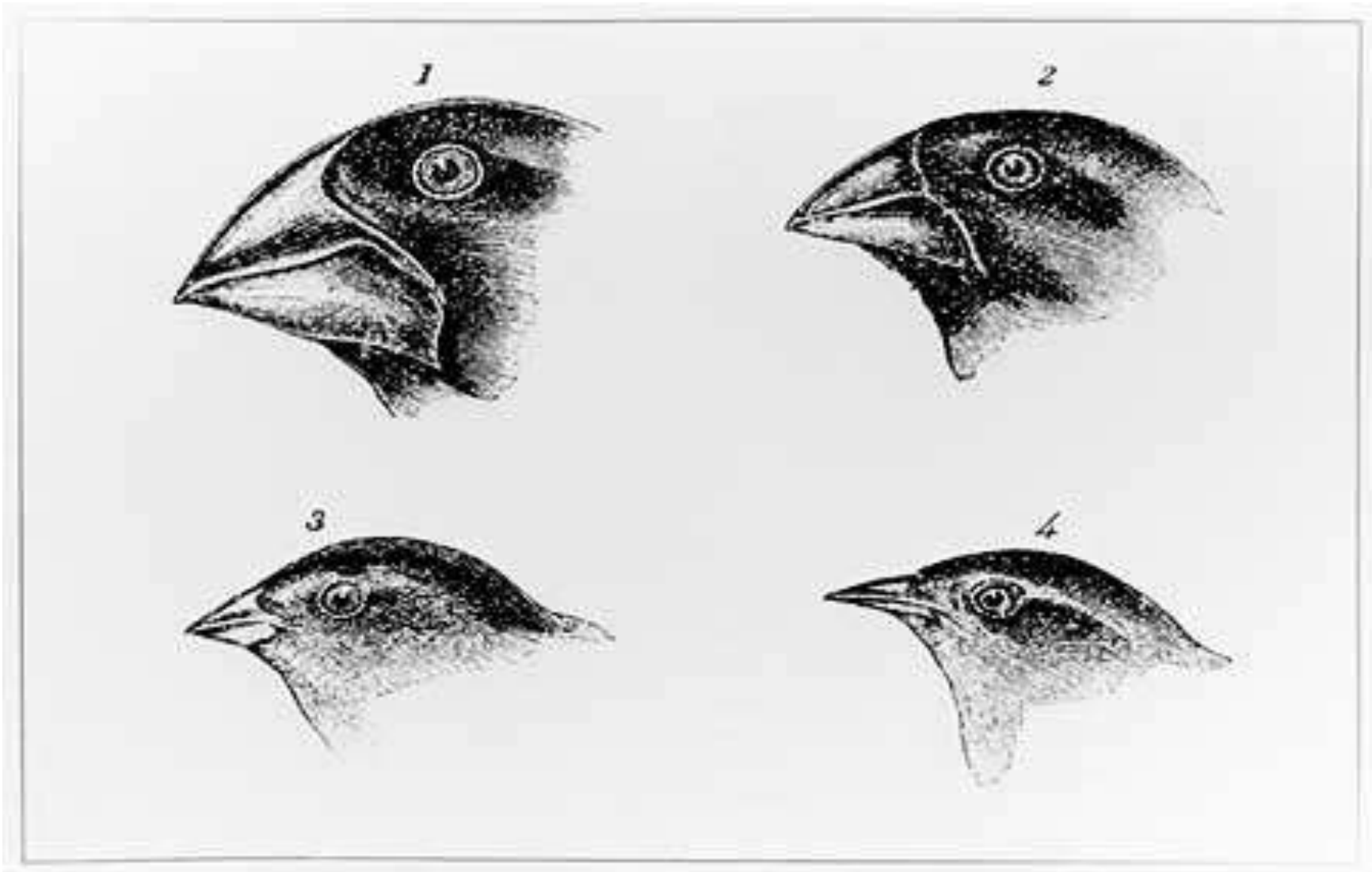
Sensing

- Senses
- Technology
- Network

Screening

- Raster/Grid
- Perimeter
- Plan





Galapagos finches showing different beak shapes



Bergfink
Fringilla montifringilla
 1 Männchen im Sommer

Buchfink
Fringilla coelebs
 1 Männchen, 1 Weibchen

Stieglitz
Carduelis carduelis
 1 altes Männchen, 1 junger Vogel

BIRDS,

Described by

JOHN GOULD, ESQ. F.L.S.

WITH

A NOTICE OF THEIR HABITS AND RANGES,

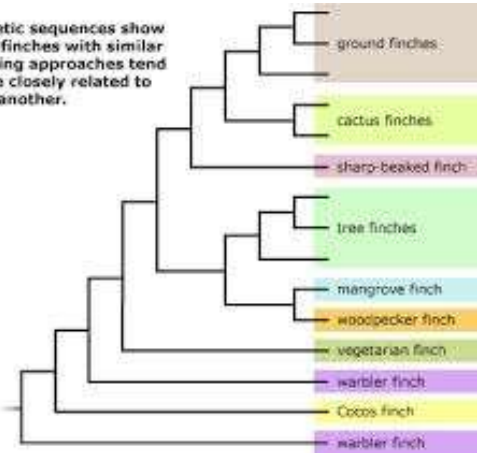
BY CHARLES DARWIN, Esq. M.A. F.R.S. SEC. GEOLOG. SOC.

AND WITH AN ANATOMICAL APPENDIX,

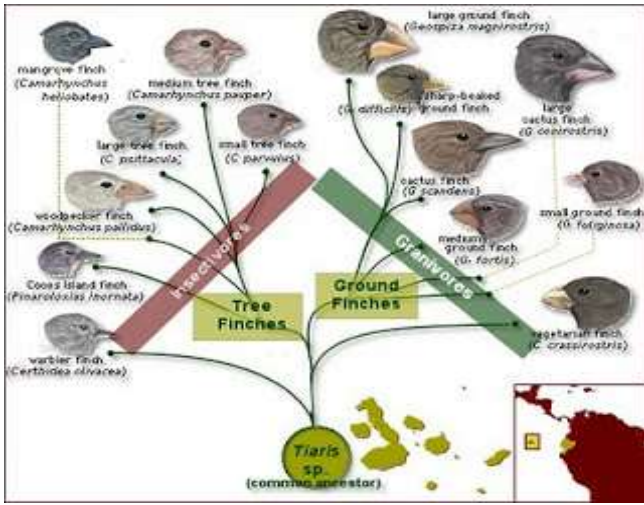
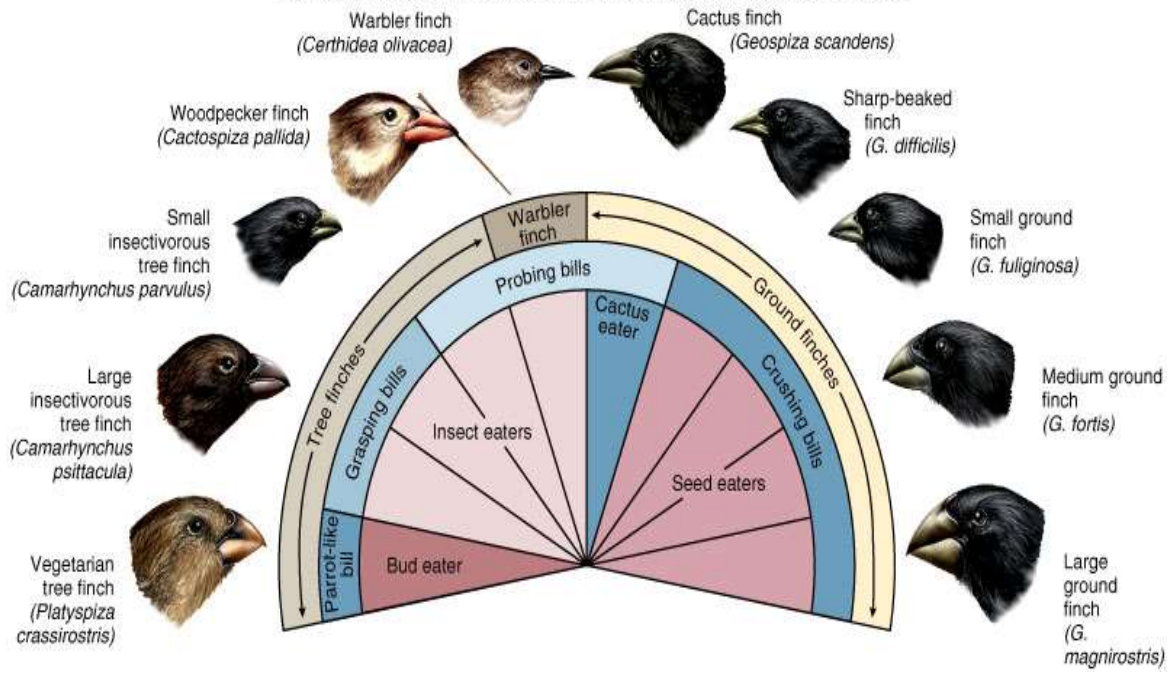
BY T. C. EYTON, ESQ. F.L.S.

ILLUSTRATED BY NUMEROUS COLOURED ENGRAVINGS.

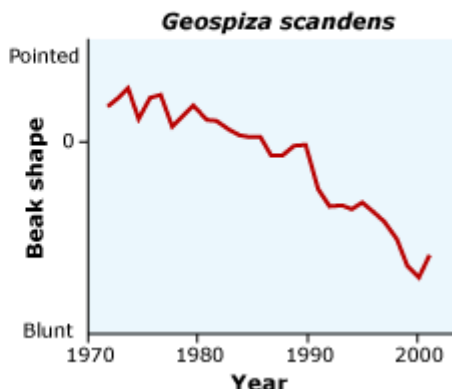
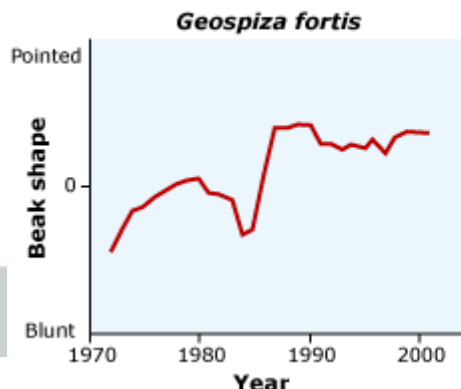
Genetic sequences show that finches with similar feeding approaches tend to be closely related to one another.



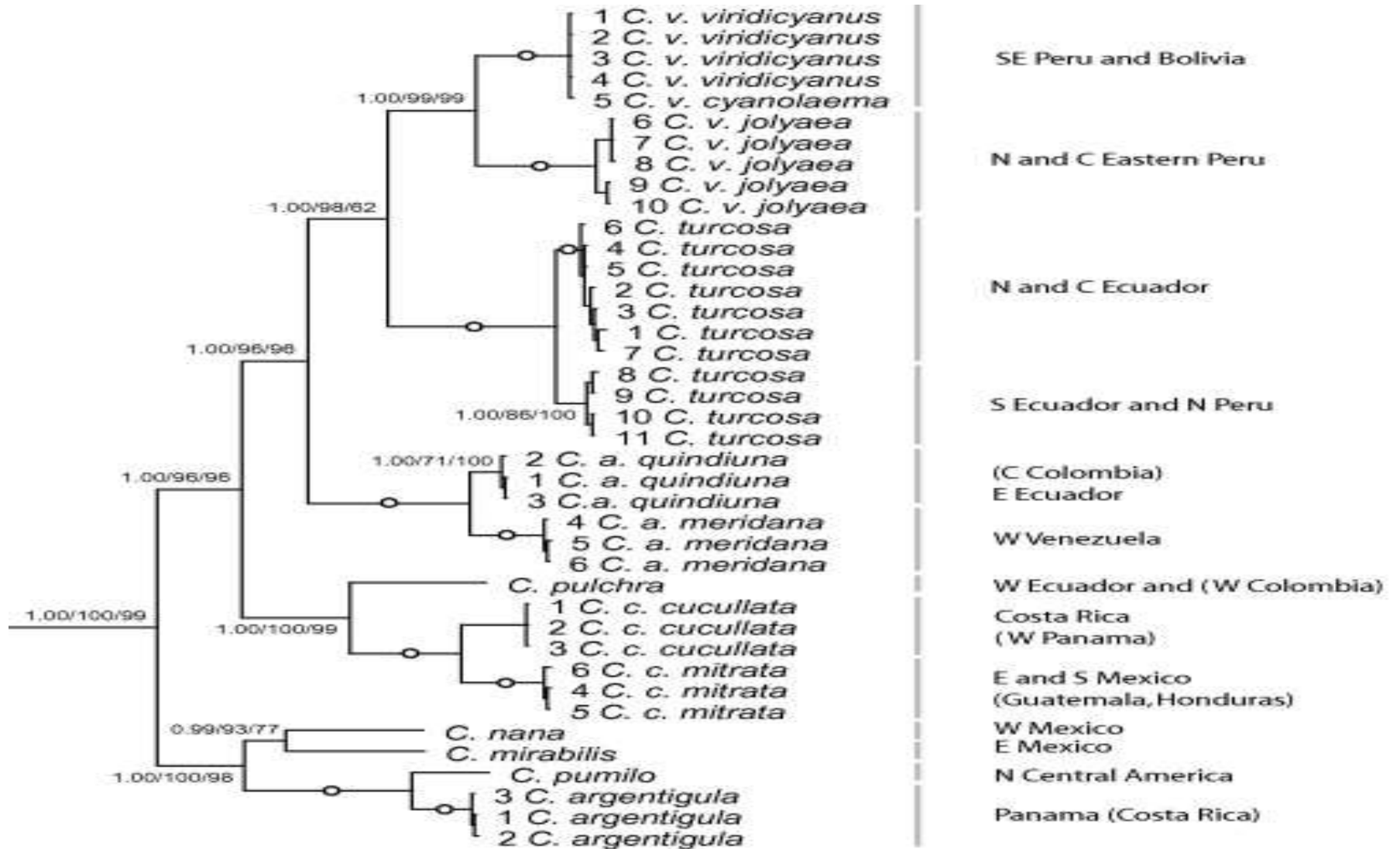
Copyright © The McGraw-Hill Companies, Inc. Permission required for reproduction or display.



These graphs of beak shape over time for two species of Galapagos finch show that a lot can change over a relatively short period.



Swiss Re

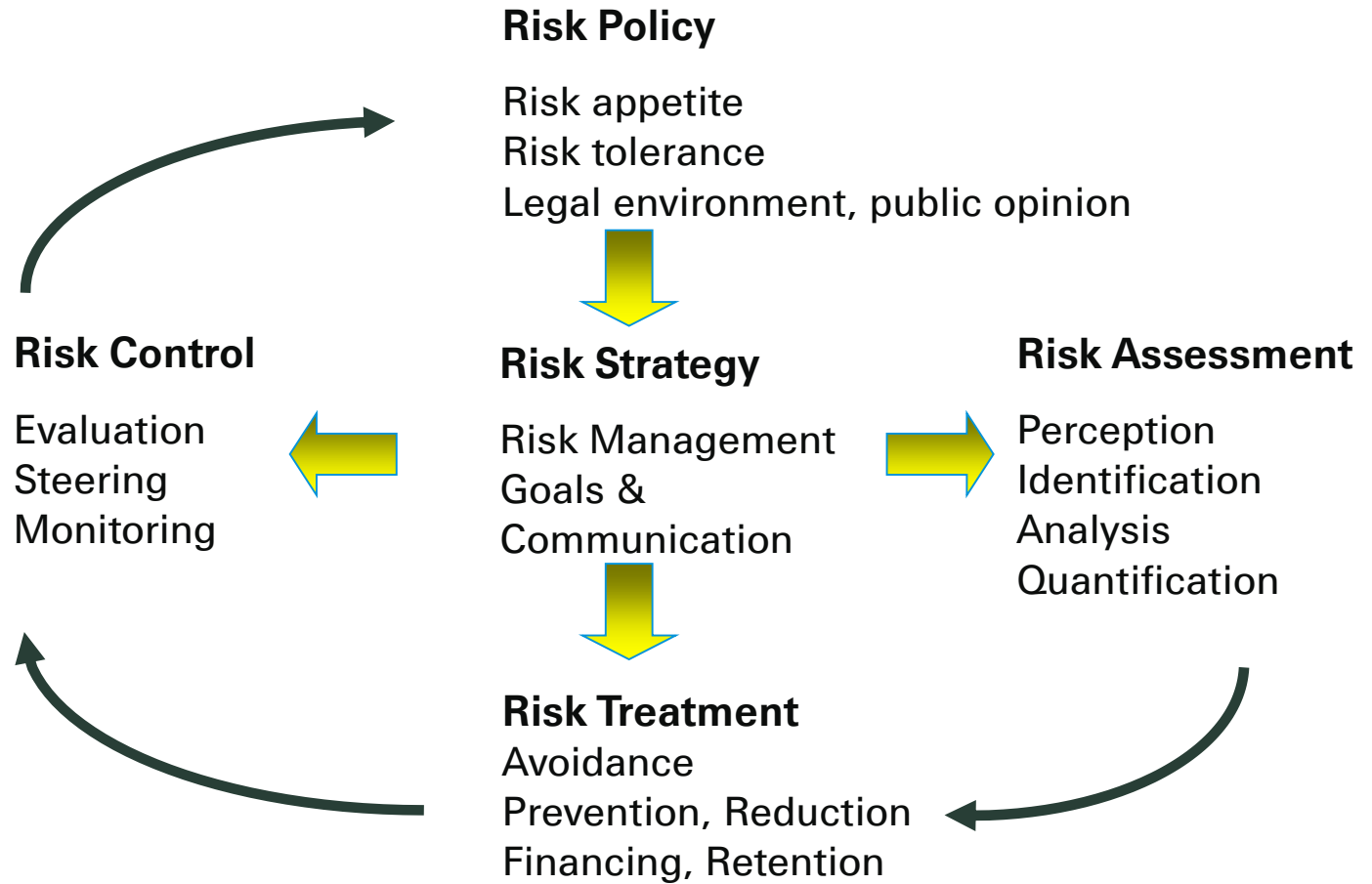


0.1 substitutions/site

○ 1.00 Bayesian posterior probability/100 ML bootstrap/100 parsimony bootstrap

Risk Management Process

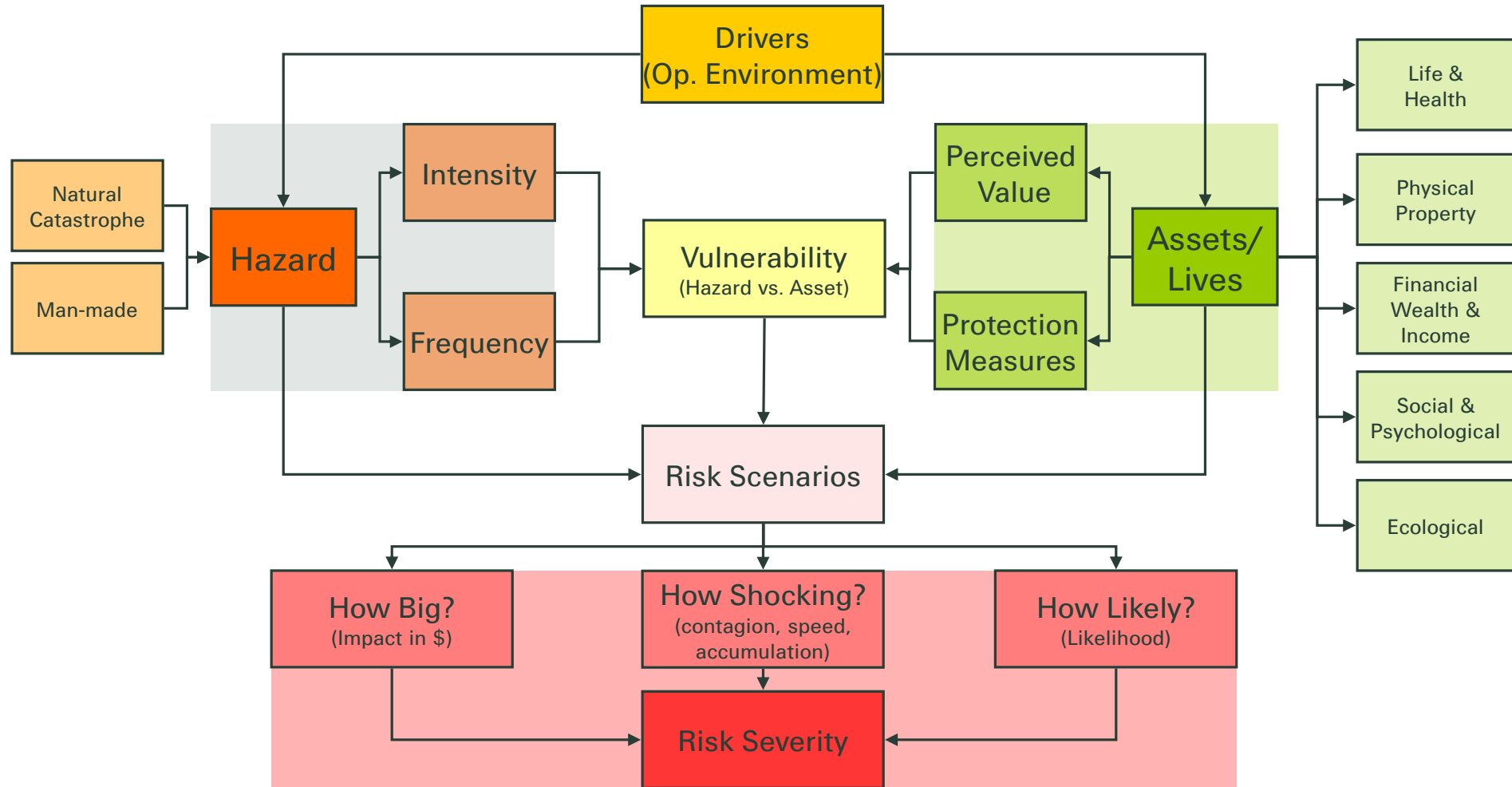
1. What can happen?
2. What can we do to prevent it?
3. Can we afford the prevention?



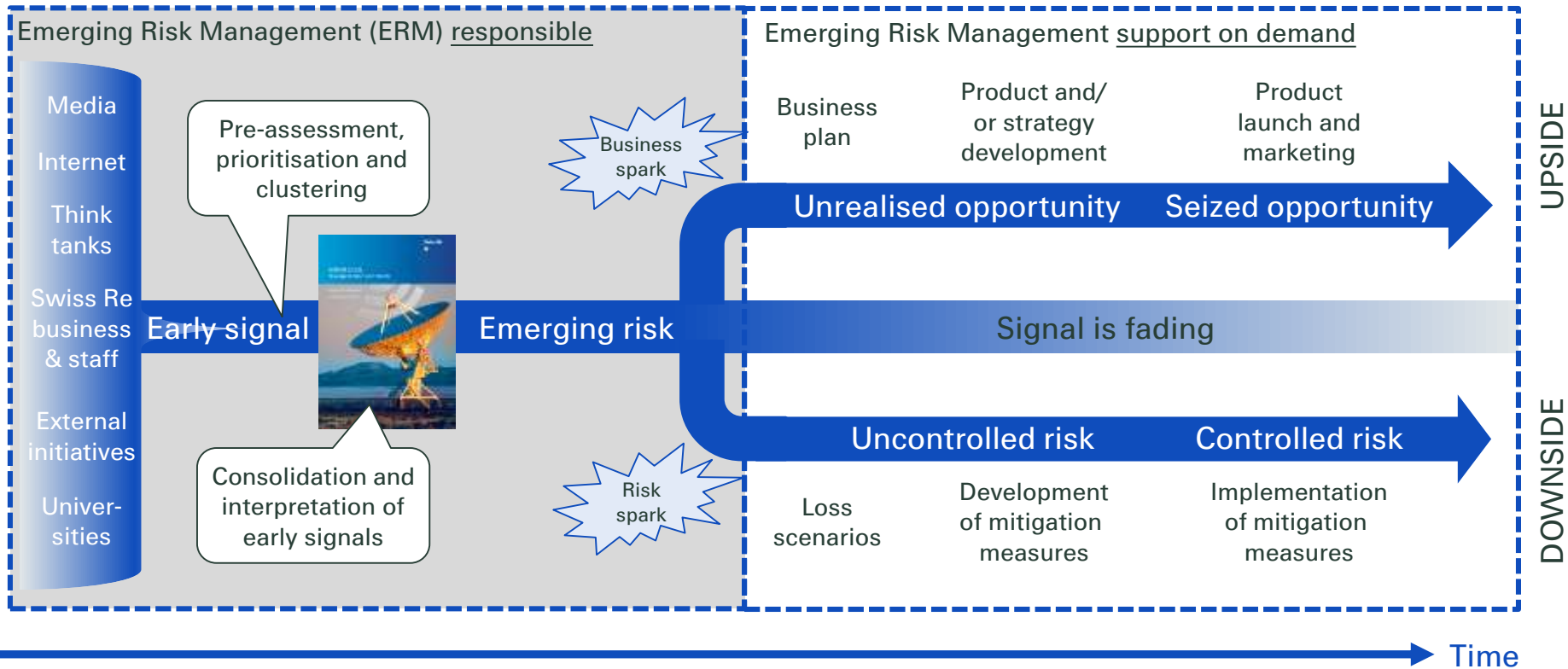
Risk assessment

- hazard
- value at risk
„exposure“
- risk mitigation
- How does the system work?
 - What is the benefit / use?
 - What can go wrong?
 - What is the consequence?
 - Public acceptance?
 - Quantification: Any numbers?
 - What could be done in terms of loss prevention?
 - Is the prevention affordable?
 - What is the accepted residual risk?

Global Risk Assessment Framework



The SONAR process ensures that early signals are identified, assessed and acted upon



Swiss Re (Client) SONAR in a nutshell

Emerging risks are an important concern for the insurance industry and its clients. Awareness has risen steadily over the last years.

With **SONAR**, Swiss Re has established a solid process for identifying, assessing and managing emerging risks.

The Swiss Re SONAR report presents insights on **25 emerging risk themes**.



The **intention of the report** is to share emerging risk insights with our clients and other stakeholders to

- act as **door-opener** for discussions on various topics,
- trigger **in-depth exchange** about emerging risk mgt. and/or selected emerging risk topics,
- support **Swiss Re's position as knowledge leader**.

The Emerging Risk Mgt. team **informs and drives debate on emerging risks** with clients and other stakeholders.

Legal notice

©2014 Swiss Re. All rights reserved. You are not permitted to create any modifications or derivative works of this presentation or to use it for commercial or other public purposes without the prior written permission of Swiss Re.

The information and opinions contained in the presentation are provided as at the date of the presentation and are subject to change without notice. Although the information used was taken from reliable sources, Swiss Re does not accept any responsibility for the accuracy or comprehensiveness of the details given. All liability for the accuracy and completeness thereof or for any damage or loss resulting from the use of the information contained in this presentation is expressly excluded. Under no circumstances shall Swiss Re or its Group companies be liable for any financial or consequential loss relating to this presentation.



Thank you